



J. Serb. Chem. Soc. 83 (4) S180–S184 (2018)

SUPPLEMENTARY MATERIAL TO
**Production of biosolvents and acids by a salinity-adapted strain of
Clostridium acetobutylicum: Effects of salt and molasses
concentrations**

REZA ZABIHI¹, DARIUSH MOWLA^{2*} and GHOLAMREZA KARIMI¹

¹Department of Chemical Engineering, School of Chemical and Petroleum Engineering,
Shiraz University, Shiraz, Iran and ²Environmental Research Centre in Petroleum and
Petrochemical Industries, School of Chemical and Petroleum Engineering, Shiraz University,
Shiraz, Iran

J. Serb. Chem. Soc. 83 (4) (2018) 411–423

* Corresponding author. E-mail: dmowla@shirazu.ac.ir; dmowla@gmail.com

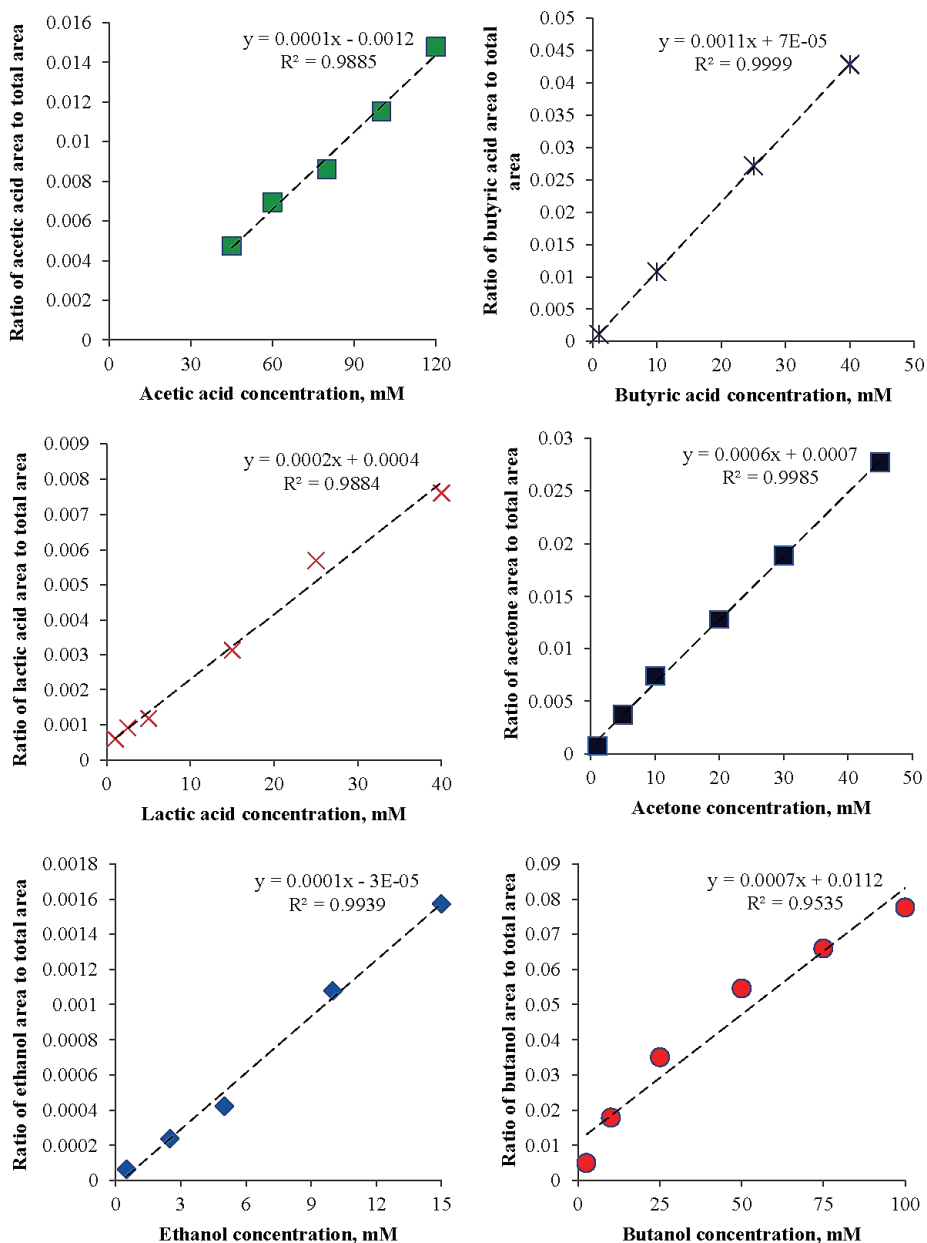


Fig. S-1. Standard curves utilized for GC analysis.

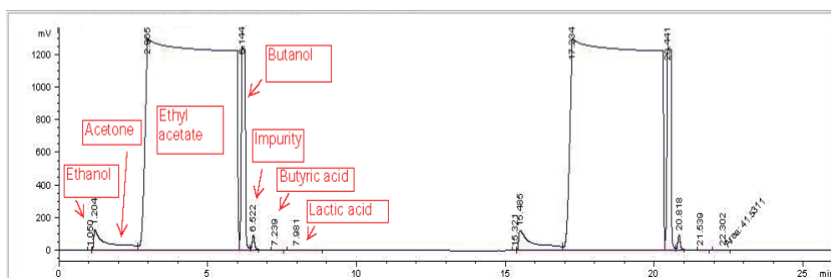


Fig. S-2. A sample GC chromatogram.

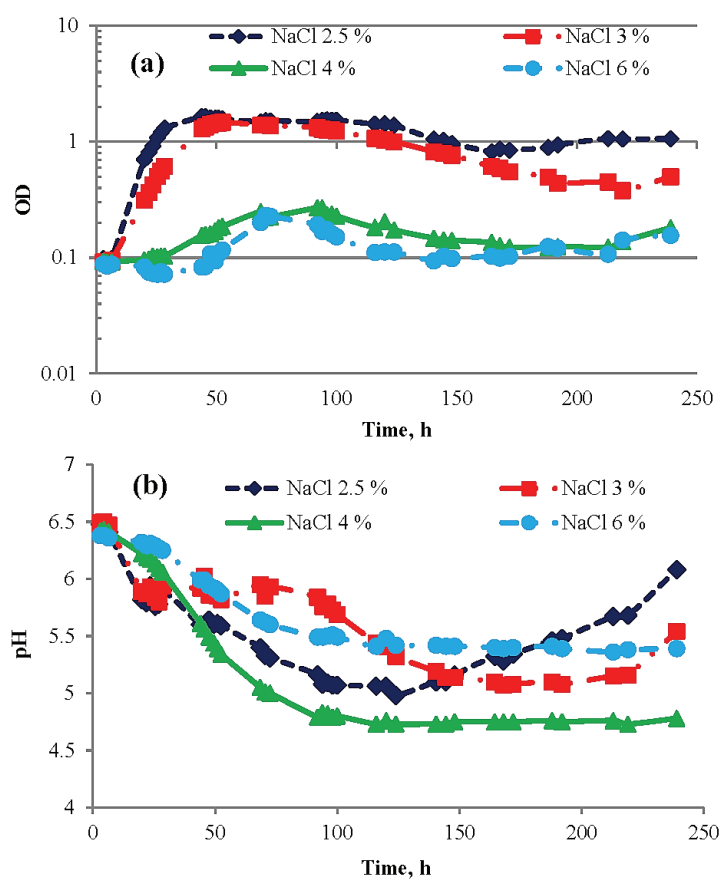


Fig. S-3. Effect of salinity on: a) growth of the adapted strain and b) pH variation.

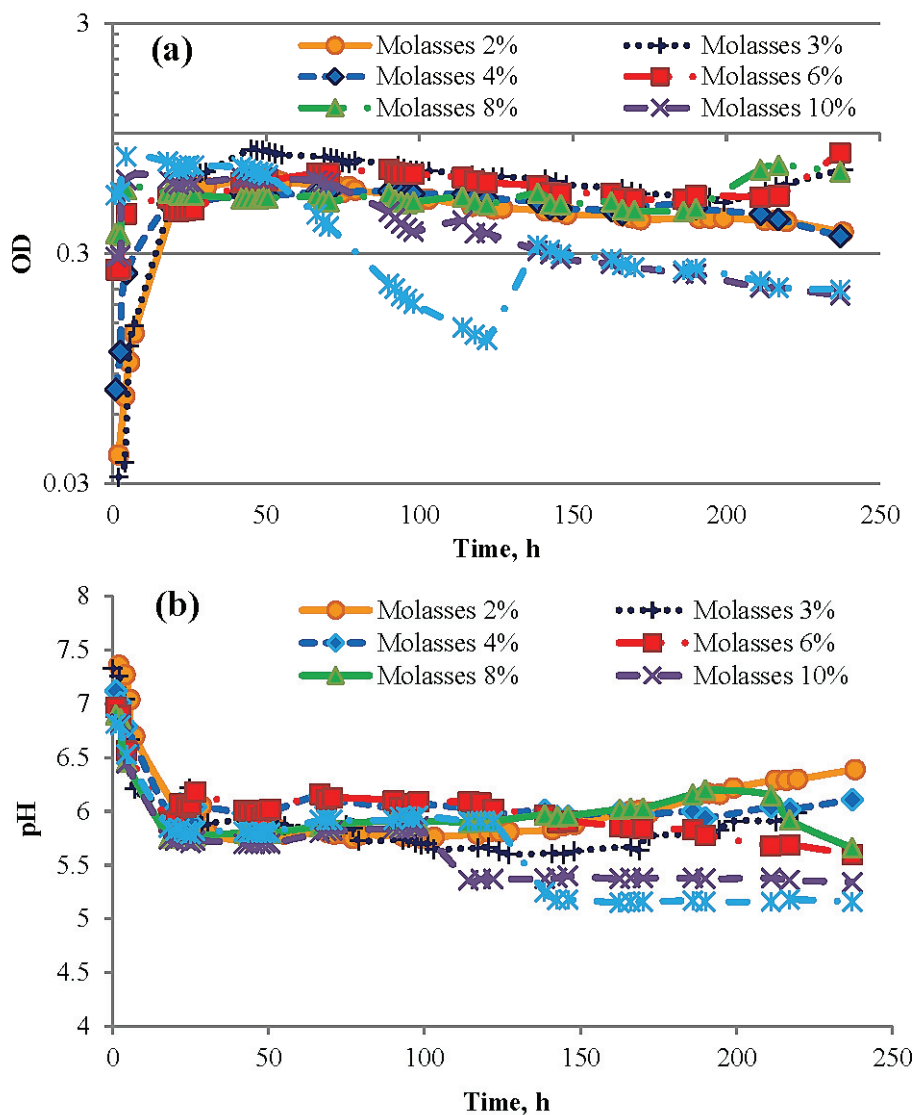


Fig. S-4. Effect of molasses on: a) growth of the adapted strain and b) medium pH variation at a low salt concentration.

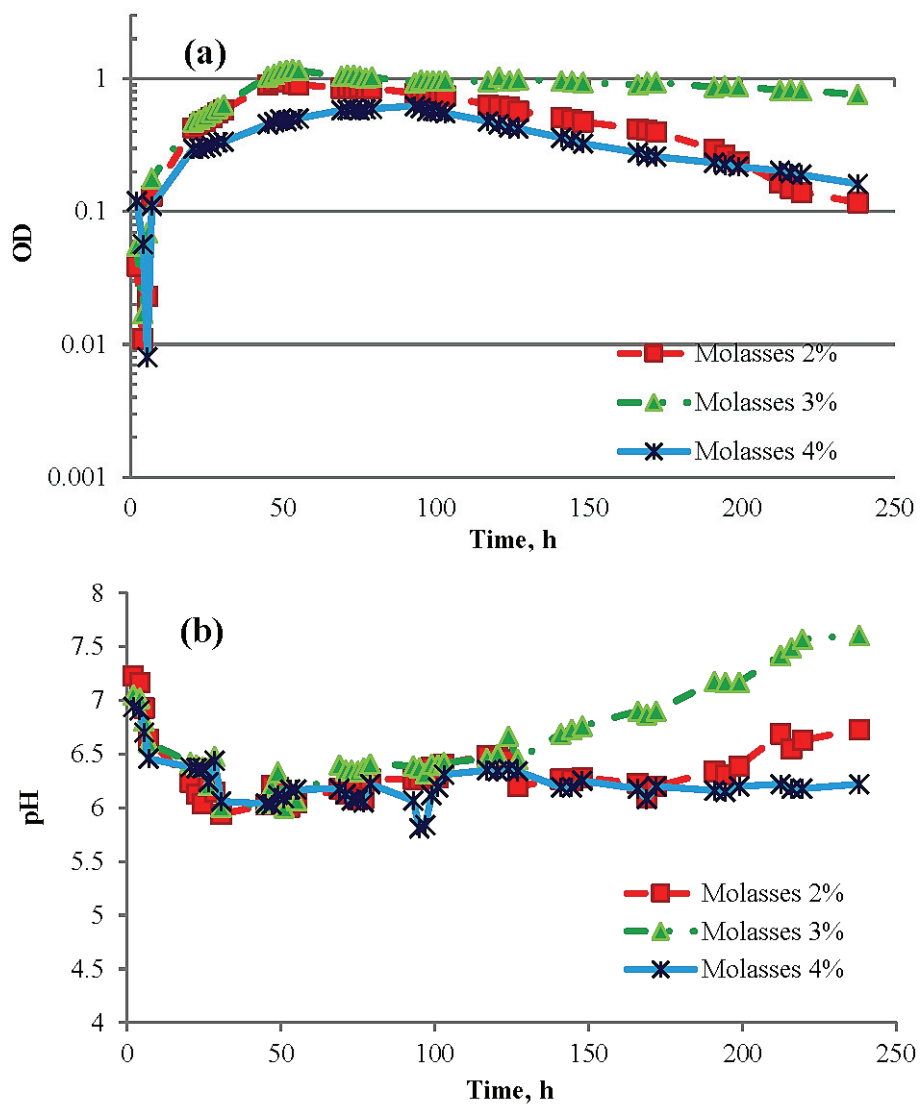


Fig. S-5. Effect of molasses on: a) growth of the adapted strain and b) medium pH variation at a high salt concentration.