

SUPPLEMENTARY MATERIAL TO
**The impact of coal ash and slag dump on the quality of surface
and ground waters – A case study**

IVANA ČIPRANIĆ¹, RADMILA MARKOVIĆ^{2*}, STEFAN ĐORĐIEVSKI²,
ZORAN STEVANOVIĆ² and Marija STEVANOVIĆ³

¹University of Montenegro, Faculty of Civil Engineering, Bulevar Džordža Vašingtona bb,
81000 Podgorica, Montenegro, ²Mining and Metallurgy Institute Bor, Zeleni bulevar 35, 19210
Bor, Serbia and ³JP EPS, EPS Jagodina, 7. jula 62, 35000 Jagodina, Serbia

J. Serb. Chem. Soc. 84 (5) (2019) 527–530

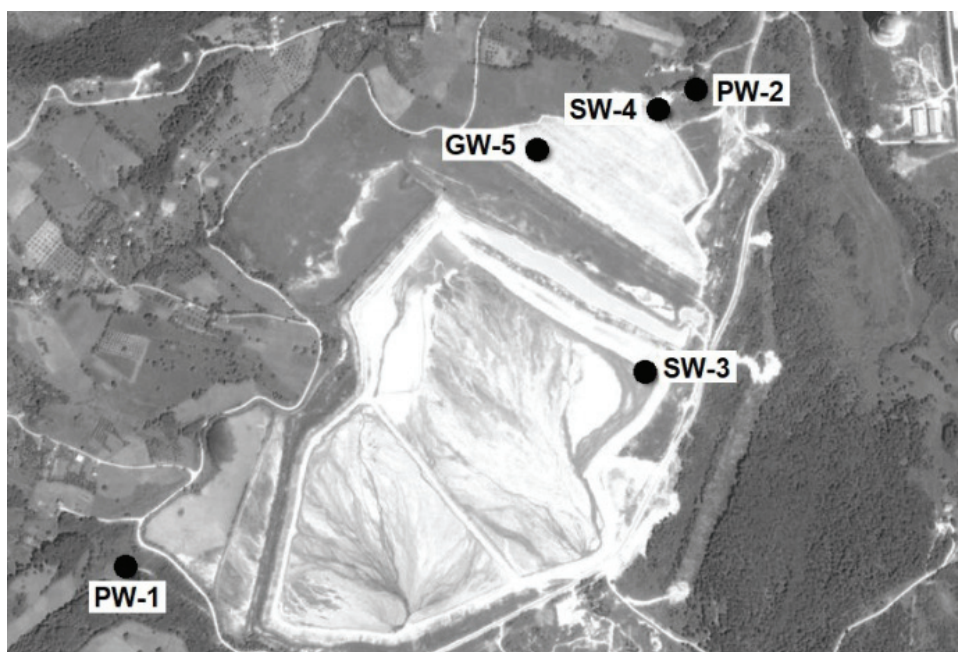


Fig. S-1. Map showing sampling points: PW-1, water sampling from Paleški Creek, upstream of the dump, PW-2, water sampling from Paleški Creek, downstream of the dump, SW-3, surface water sampling from the dump, SW-4, water sampling from the borehole 4 (5 m depth), GW-5, water sampling from the borehole 5 (21 m depth).

* Corresponding author. E-mail: radmila.markovic@irmbor.co.rs