

SUPPLEMENTARY MATERIAL TO

**Chemical structure and antifungal activity of mint essential oil components**

DRAGANA V. PLAVŠIĆ<sup>1,2\*</sup>, MARIJA M. ŠKRINJAR<sup>1</sup>, ĐORĐE B. PSODOROV<sup>3</sup>,  
LATO L. PEZO<sup>4</sup>, IVAN LJ. MILOVANOVIĆ<sup>2</sup>, DRAGAN Đ. PSODOROV<sup>5</sup>,  
PREDRAG S. KOJIĆ<sup>1#</sup> and SUNČICA D. KOCIĆ-TANACKOV<sup>1</sup>

<sup>1</sup>Faculty of Technology, University of Novi Sad, Bulevar cara Lazara 1, Novi Sad, 21000, Serbia, <sup>2</sup>Institute of Food Technology, University of Novi Sad, Bulevar cara Lazara 1, Novi Sad, 21000, Serbia, <sup>3</sup>Faculty of Science, Department of Geography, Tourism and Hotel Management, University of Novi Sad, Trg Dositeja Obradovića 3, 21000 Novi Sad, Serbia,

<sup>4</sup>Engineering Department, Institute of General and Physical Chemistry, University of Belgrade, Studentski Trg 12–16, 11000 Belgrade, Serbia and <sup>5</sup>College of Management and Business Communications, Mitropolita Stratimirovića 110, 21205 Sremski Karlovci, Serbia

*J. Serb. Chem. Soc.* 85 (9) (2020) 1149–1161

TABLE S-I. Active compounds contents in *Mentha piperita* essential oil

	VR3 Dt	ATSC8s	minsssCH	VPC-4	BCUTp-11	MATS2e
1.8-cineol	5.109	0.000	0.823	2.411	6.631	0.158
3-para-menthen	4.848	2.640	-0.128	1.242	5.497	0.002
alpha-cubebene	7.264	2.278	0.901	3.611	6.488	0.103
alpha-humulene	7.482	5.557	0.000	1.393	6.646	0.083
alpha-pinene	4.127	0.000	0.922	2.971	6.577	0.144
alpha-terpineol	4.177	3.447	0.464	1.601	5.628	0.085
beta-farnesene	7.098	0.400	0.000	0.697	5.594	0.000
beta-pinene	4.127	0.000	0.867	2.930	6.440	0.113
carvone	5.643	4.931	0.395	1.109	4.942	0.059
Caryophyllene	9.196	4.441	0.532	3.495	6.474	0.044
D-germacrene	7.289	4.757	0.711	1.349	6.455	0.002
iso-menthol	4.848	2.198	-0.029	1.521	5.448	0.004
iso-menthone	5.291	4.302	0.155	1.097	4.459	0.244
isopulegol	4.848	2.640	-0.128	1.242	5.494	0.002
limonen	3.767	1.480	0.767	1.009	6.190	0.043
linalool	4.278	1.533	0.000	0.825	5.601	0.098
menthol	4.848	2.198	-0.029	1.521	5.448	0.004
menthone	4.848	3.168	0.367	1.356	4.972	0.046
menthyl-acetate	7.334	-19.058	-1.009	1.749	4.529	0.156
myrcen	3.810	-1.936	0.000	0.408	5.574	0.006
neo-iso-menthol	4.848	2.198	-0.029	1.521	5.448	0.004
o-cimen	4.177	6.199	0.000	1.039	5.570	0.096
piperiton	4.848	4.173	0.290	1.205	5.073	0.056
pulegon	4.848	4.067	0.602	1.117	5.066	0.063

\* Corresponding author. E-mail: dragana.plavsic@fins.uns.ac.rs

TABLE S-I. Continued

VR3 Dt	ATSC8s	minsssCH	VPC-4		BCUTp-11	MATS2e
sabinen	3.890	0.000	0.886	2.531	6.234	0.083
trans-caryophyllene	9.003	3.647	0.833	2.824	6.613	0.073
trans-sabinen-hidrat	3.890	0.000	0.886	2.531	6.234	0.083

TABLE S-I. Active compounds contents in *Mentha piperita* essential oil (Continued)

	ATSC2v	hmax	AVP-4	AATSC2m	MATS7m	AATSC2v
1.8-cineol	405.012	0.311	0.089	8.026	0.000	6.640
3-para-menthen	13.070	0.493	0.101	0.514	-0.454	0.238
alpha-cubebene	446.258	0.290	0.079	2.963	-0.025	5.509
alpha-humulene	319.708	0.394	0.095	2.388	-0.280	4.440
alpha-pinene	398.302	0.290	0.091	4.119	0.000	7.660
alpha-terpineol	232.489	0.380	0.100	4.376	-1.038	4.227
beta-farnesene	-1.332	0.410	0.108	-0.011	-0.446	-0.020
beta-pinene	311.715	0.318	0.093	3.224	0.000	5.995
carvone	227.612	0.488	0.075	4.067	-0.926	5.058
Caryophyllene	337.459	0.476	0.089	3.125	-0.353	4.218
D-germacrene	7.993	0.377	0.100	0.060	-0.488	0.111
iso-menthol	-31.258	0.450	0.113	0.126	-0.303	-0.512
iso-menthone	-54.905	0.556	0.083	2.853	0.093	-0.947
isopulegol	13.070	0.493	0.101	0.514	-0.454	0.238
limonen	109.233	0.348	0.101	1.224	-1.000	2.276
linalool	117.548	0.443	0.108	3.936	-0.801	2.399
menthol	-31.258	0.450	0.113	0.126	-0.303	-0.512
menthone	41.109	0.401	0.101	1.450	-0.276	0.721
menthyl-acetate	-18.685	0.763	0.089	2.595	-0.331	-0.243
myrcen	13.321	0.417	0.108	0.171	-0.648	0.317
neo-iso-menthol	-31.258	0.450	0.113	0.126	-0.303	-0.512
o-cimen	416.499	0.449	0.060	7.745	-1.042	9.686
piperiton	177.434	0.445	0.085	3.101	-0.609	3.479
pulegon	265.891	0.445	0.084	4.100	-0.395	5.214
sabinen	226.460	0.324	0.088	2.388	0.625	4.440
trans-caryophyllene	297.062	0.334	0.095	2.102	-0.265	3.909
trans-sabinen-hidrat	226.460	0.324	0.088	2.388	0.625	4.440

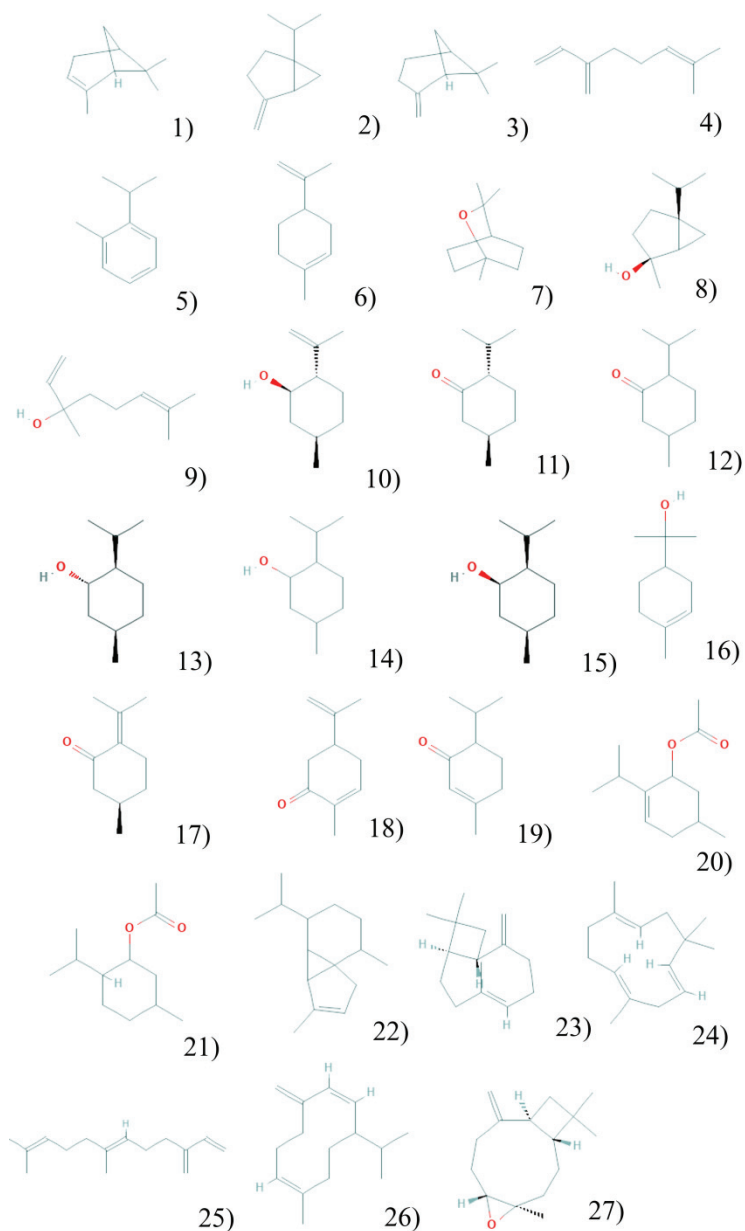


Fig. S-1. Chemical structures of compounds of the tested essential oil: 1)  $\alpha$ -pinene, 2) sabinene, 3)  $\beta$ -pinene, 4) myrcene, 5) o-cymene, 6) limonene, 7) 1,8-cineol, 8) trans-sabinene hydrate, 9) linalool, 10) isopulegol, 11) menthon, 12) iso-menthone, 13) iso-menthol, 14) menthol, 15) neo-isomenthol, 16)  $\alpha$ -terpineol, 17) pulegon, 18) carvone, 19) piperiton, 20) 3-para-menthen, 21) menthyl acetate, 22)  $\alpha$  kubenene, 23) trans-caryophyllene, 24)  $\alpha$ -humulene, 25)  $\beta$ -farnesene, 26) D-germacrene, 27) caryophyllene-oxide.